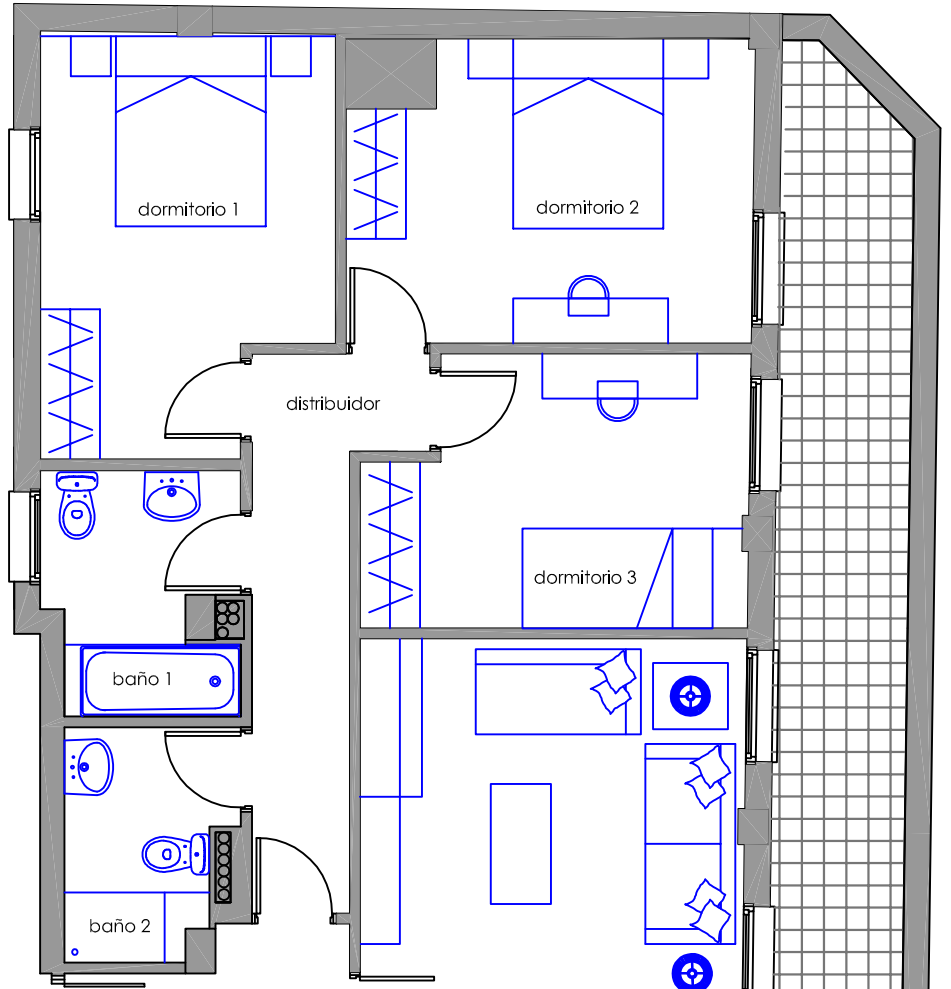


VIVIENDA ÁTICO B planta 5ª

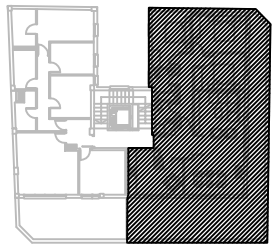
|                              |  |
|------------------------------|--|
| cocina                       | 12.38 m <sup>2</sup> u                               |
| salon-comedor                | 31.52 m <sup>2</sup> u                               |
| baño 1                       | 4.40 m <sup>2</sup> u                                |
| baño 2                       | 3.63 m <sup>2</sup> u                                |
| dormitorio 1                 | 11.51 m <sup>2</sup> u                               |
| dormitorio 2                 | 12.01 m <sup>2</sup> u                               |
| dormitorio 3                 | 9.81 m <sup>2</sup> u                                |
| recibidor                    | 5.44 m <sup>2</sup> u                                |
| distribuidor                 | 6.27 m <sup>2</sup> u                                |
| <hr/>                        |  |
| TOTAL PISO B<br>+<br>TERRAZA | 96.97 m <sup>2</sup> u<br><br>51.16 m <sup>2</sup> u |

patio interior



recibidor

salon-comedor



Calle Leandro Azcárate

Calle Zubizarne

cocina

terrazza